

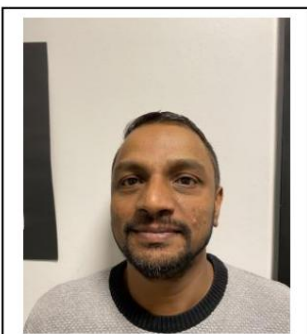
Today's progress and My adults - May period 2026:

At	Time	What	Why	How
06:30 - 08:00	90 min.	Morning opening It is	important to have a good start to the day. Because a good start often leads to a good day. That is why we offer a time with quiet surroundings and breakfast for both school children and May children.	<ul style="list-style-type: none"> • will meet the regular morning adults opening team with fixed routines that the children know and are comfortable with. • Please note that the morning opening is for all KKFO children.
08:00 - 09:00	60 min.	Receipt	Most May children arrive between 8 and 9 a.m. and it is therefore important that we pay special attention to the reception and that the children say goodbye to their parents so that they are safe and ready for the day.	<ul style="list-style-type: none"> • We strive to have two adults for each group at the reception. • Each group room is opened and prepared with easily accessible activities. • It must be clear for the child to identify where they belong and what the child can do. • It will be possible to go to the playground with an adult if the need arises.
09:00 - 09:45	45 min.	Morning assembly We hold a morning	assembly to reflect the kindergarten's way of starting the day. This allows us to create a recognizable framework that is easier for the child to access.	<ul style="list-style-type: none"> • The morning assembly includes fixed routines where we say good morning with a simple activity such as singing or playing in a circle. • We review the day and whatnot. • Finally, we eat 9-course meals.
09:45 - 10:15	30 min.	Pause On the playground	We take a break at the playground, as it's good to get some exercise and fresh air. The time period roughly reflects the time during which recess is held at school.	<ul style="list-style-type: none"> • The adults go with the children to the playground.
10:15 - 11:15	60 min.	Activity	Each day has a primary activity. Activities should focus on social relationships between child/child and child/adult, because it is important that all children feel they have someone to play and talk to.	<ul style="list-style-type: none"> • The activities can be planned as trips or activities that repeat every week on fixed days. • It is also possible to spend an entire week on the same type of activity, where the content of the activity is expanded and further developed as a project.
11:15 - 11:30	15 min.	Change for lunch We	set aside fifteen minutes to change between activity and lunch. This enables the activities to	<p>During this time we have plenty of time to:</p> <ul style="list-style-type: none"> • Washed fingers

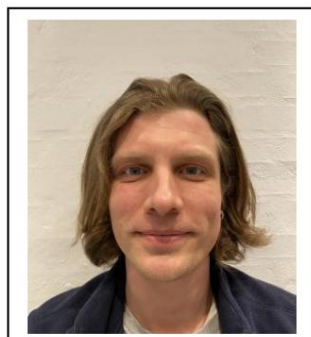
			can be concluded well and common messages can be given to the group of children so that all children understand what is to be done next happen and what it requires.	<ul style="list-style-type: none"> • Find packed lunches and drinking bottles • Get comfortable in the group room.
11:30 - 12:00	30 min.	Lunch	The time period approximately reflects the time during which lunch breaks are held at school.	<ul style="list-style-type: none"> • Saying "please" together • Story is read/told
12:00 - 12:45	45 min.	Outdoors	The time period roughly reflects the time during which recess is held at school.	<ul style="list-style-type: none"> • The adults supervise and are divided into the playground. • The adults follow the children's interests and support good play and relationships. • Adults can initiate games if needed. • Attention to children walking alone.
12:45 - 13:00	15 min.	Mini talk/gathering	The children are prepared for the arrival of schoolchildren. KKFO	<ul style="list-style-type: none"> • Mini gatherings can be held in the children's group room or on the playground. • Mini-gathering is a more informal gathering that briefly rounds off the day. • The adult makes sure that all children in the group know what they need to do and have someone to play with.
13:00 - 17:00		KKFO	The afternoon has room for many types of children at different stages of their development. The framework offers the usual leisure activities for both school children and May children.	<ul style="list-style-type: none"> • May and June afternoons are scheduled in advance. • Activities that include both May children and school children have been taken into account.
Remember				
KKFO closes at 16:30				
about Friday				

The adults in my May group (The period from May 4th to the summer holidays):

BLUE group (Group room: "Fantasy room"/"Family room")



Ajit, Primary Teacher



Lau, Pedagogue



**Mathilde Philipa
Ped. Assist.**



Caroline, Pedagogue



Sofie, Pedagogical Assistant.



Maria, Pedagogue

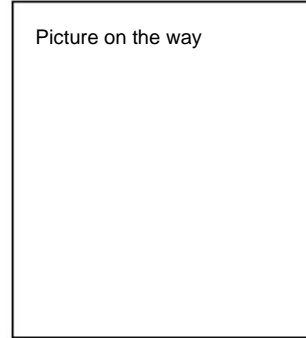
YELLOW group (Group room: "Krea"/"Tegn")



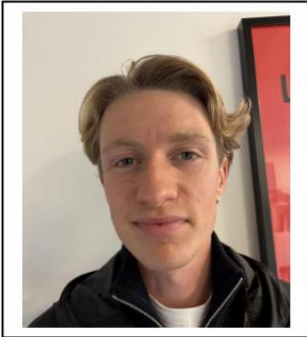
Elin, Primary teacher



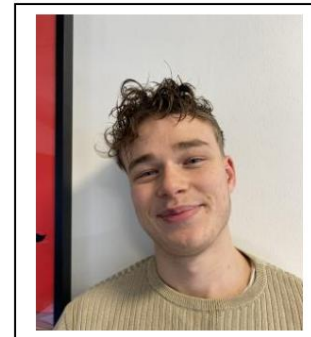
Jesper, Ped. Associate Professor



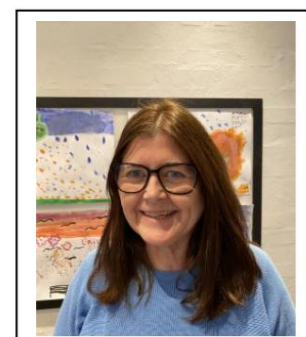
Emma, Pedagogue



Kristian, Ped. Associate Professor



Elias, Ped. Associate Professor



Lene, Pedagogue

GREEN group (Group room: "The Library")



Marcus, Primary teacher



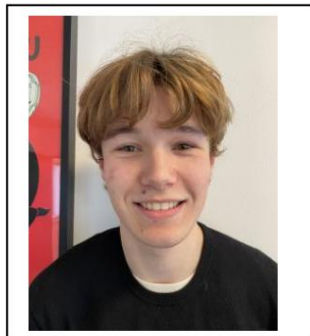
Louise, Pedagogue



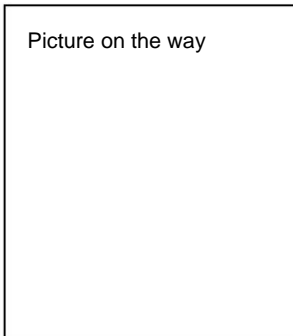
Helle, Ped. Associate Professor



Chi, Educator



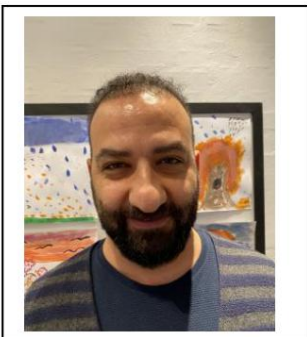
Tobias, Ped. Associate Professor



Fatma, Pedagogue

Primary educators will follow the children from the beginning of May onwards and will be in the class after school starts in August.

OTHER ADULTS YOU WILL MEET AT KKFO HOLBERG:



Fuat, Music/Pedagogical Assoc.



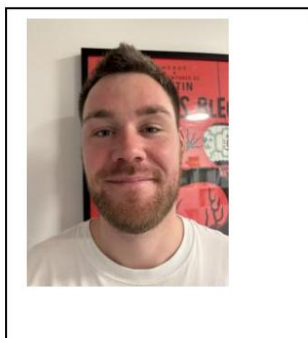
**Jeanette,
Transitional educator**



**Faith
Inclusion educator**



**Sofie T.
Morning opener**



**Rasmus
Morning opener**



**Emma Sophie
Morning opener**

**Thank you for reading... We look forward to welcoming you and your parents on May 4, 2026.
Welcome**

Many kind regards

KKFO's Staff

Contact information:

KKFO Holberg/Leisure institution at Holberg School:

Emdrupvej 134 (Greenhouse Bh.Kl.,-1st year) and Emdrupvej 96 (Skrænten 2nd-3rd year)

2400 Copenhagen NW

The Greenhouse – phone 33 66 22 08, press 1

Contact us by email: ui55@kk.dk

Website: www.holbergskolen.aula.dk